

**KITO**



# TEM | TSEM

MINI ENTERTAINMENT HOIST

**KREW MATE**



## Little hoist - big stage presence.

Let the little guy wow the crowd: the EM Krewmate Mini Entertainment Hoist all but disappears behind the scenes, but it gives the performance of a lifetime onstage. With its state-of-the-art control systems using Solid State Relay (SSR) technology and a microcontroller (MCU) to increase longevity of the hoist and provide superior safety function, the EM is ready to sing from curtains-up to the encore. Available in single and three phase power.



**TEM/TSEM** Mini Entertainment Hoist

# Features

# KITO



## Unique Chain Guide

Discharges chain from the side of the hoist body preventing tangling when winding up slack chain.



## Grease-Packed Gearbox

For demanding applications. Industry standard.



## Low Profile Upper Limit Switch

Protects the hoist from overwinding and offers exceptional headroom.



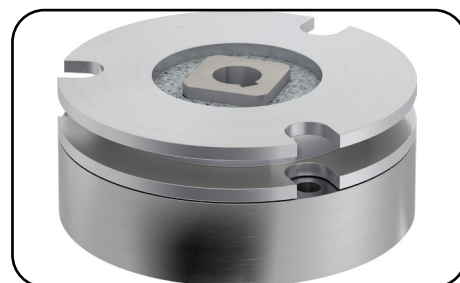
## Solid State Relay Board

No mechanical contacts for extended lifetime and microcontroller provides protection from fast reverse, phase loss, & reversal (3ph), overcurrent, overtemperature, and overvoltage. Includes electronic overload limiter and an LED error indicator.



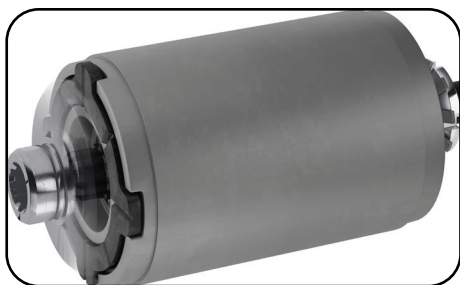
## Forged Carbon Steel Hooks

Under excessive loads will open gradually and not fracture. Ball bearings produce smooth rotation. Bottom hook will swivel 360 degrees. Heavy-duty hook latches are standard.



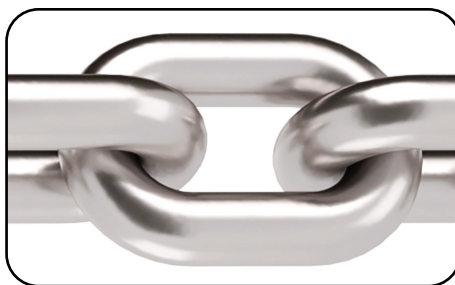
## High Performance Motor Brake

Fast acting and durable current driven electromagnetic brake. The simple design means no brake coil to fail and no brake disc to replace. 5 year warranty.



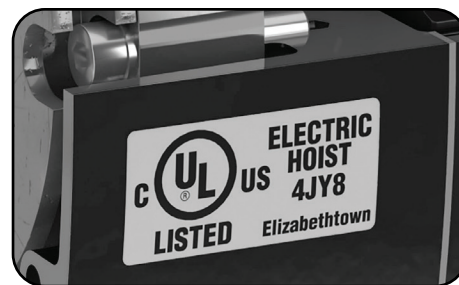
## Friction Clutch

Rotor integrated friction clutch outside of the load path provides consistent performance over a wide temperature range.



## Nickel-Plated Load Chain

Grade 80, super strength load chain with superior corrosion resistance.



## UL Listed

Certified and listed to UL1340 "Standard for Hoists" and CSA 22.2 No. 33 "Construction and Test for Electric Cranes and Hoists."

## Specifications

Safety Standard: ASME B30.16  
Hoist classification: ASME H4  
Electrical certification: CSA 22.2 No.33  
Environmental protection: Hoist - IP65





CONTACT YOUR NEARBY  
KITO CANADA DISTRIBUTOR

**KITO**

All other specifications, dimensions, and drawings are available at [www.kito.ca](http://www.kito.ca)  
Please call **1 888 322 KITO (5486)** for more information or assistance

**WESTERN CANADA**

309-3815 1ST AVE  
BURNABY, BC  
V5C 3V6

**EASTERN CANADA**

4-3660 ODYSSEY DR  
MISSISSAUGA, ON  
L5M 0Y9